

Injection Date : Mon, 16. Oct. 2023 Seq Line : 13
Location : 86
Inj. Vol. : 2 µl

Acq. Method : C:\Users\Public\Documents\ChemStation\1\Data\SE16OCT 2023-10-16
10-35-31\22010446C LCMS-6#.M

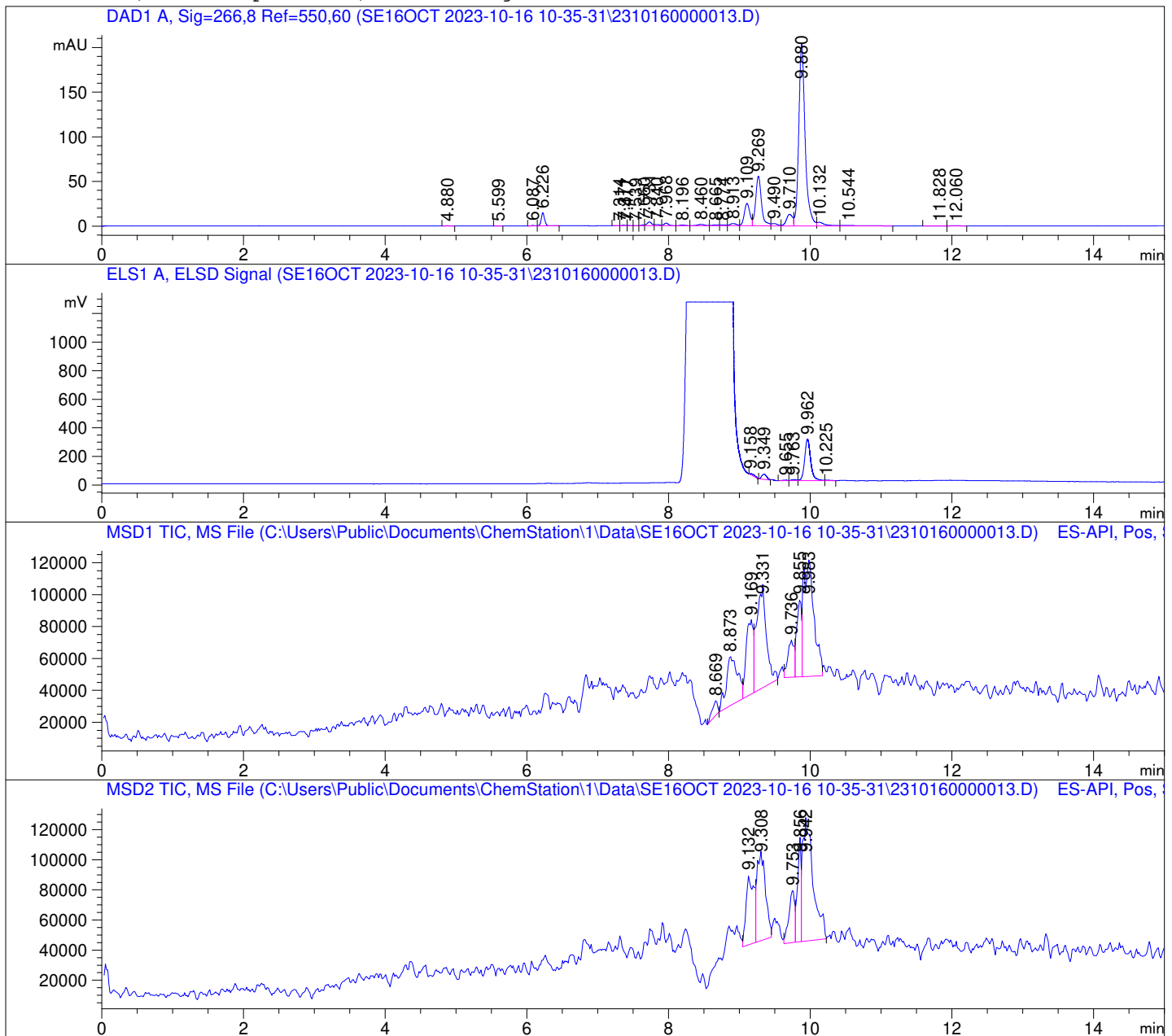
Analysis Method : C:\Users\Public\Documents\ChemStation\1\Data\SE16OCT 2023-10-16
10-35-31\22010446C LCMS-6#.M (Sequence Method)

Waters XBridge BEH Amide (4.6 x 150 mm, 2.5 µm); PN# 186006726

Mobile Phase A: 20mM Ammonium Acetate (aq) pH 8.2

Mobile Phase B: AcN

Mobile Phase A / Mobile Phase B: 5/95 (0 min) --> (10 min) --> 60/40 (5 min); Flow:
1.0 ml/min; MSD1 = positive; MSD2 = negative



DAD1 A, Sig=266,8 Ref=550,60

Peak #	Ret. Time [min]	Area [mV *s]	Area %
1	4.880	0.695	0.035
2	5.599	0.356	0.018
3	6.087	1.768	0.088
4	6.226	48.045	2.396
5	7.314	0.448	0.022
6	7.371	2.600	0.130
7	7.417	1.222	0.061
8	7.539	0.783	0.039
9	7.660	2.786	0.139
10	7.731	20.528	1.024
11	7.840	7.387	0.368
12	7.968	14.236	0.710
13	8.196	5.373	0.268
14	8.460	12.431	0.620
15	8.665	6.816	0.340
16	8.774	5.757	0.287
17	8.913	16.821	0.839
18	9.109	137.253	6.844
19	9.269	313.635	15.638
20	9.490	14.677	0.732
21	9.710	78.142	3.896
22	9.880	1273.715	63.508
23	10.132	30.370	1.514
24	10.544	8.236	0.411
25	11.828	0.771	0.038
26	12.060	0.733	0.037

ELS1 A, ELSD Signal

Peak #	Ret. Time [min]	Area [mV *s]	Area %
1	9.158	52.179	2.539
2	9.349	180.343	8.775
3	9.655	23.452	1.141
4	9.763	44.004	2.141
5	9.962	1730.972	84.222
6	10.225	24.295	1.182

